

# Jerilderie Public School



## NEWSLETTER

Tuesday 28, July '09  
Volume 44, Issue 23  
31 Bolton Street  
JERILDERIE NSW 2716  
Ph: 03 5886 1331  
Fax: 03 5886 1615  
Email:

[jerilderie-](mailto:jerilderie-p.school@det.nsw.edu.au)

[p.school@det.nsw.edu.au](mailto:p.school@det.nsw.edu.au)

Website: [jerilderie-](http://jerilderie-p.schools.nsw.edu.au)  
[p.schools.nsw.edu.au](http://p.schools.nsw.edu.au)

Portal:

[https://portal.det.nsw.edu.](https://portal.det.nsw.edu.au/)  
[au/](https://portal.det.nsw.edu.au/)

*Andrew McEachern*  
(Relieving Principal)

Inside this issue:

Welcome Back	1
New Students	1
Uni NSW Comps.	1
Laing O'Rourke	1
SLSO	1
CSU Intern	1
Lions Club Speeches	1
Leadership Program	1
Human Swine Flu	1
Upcoming Events	2
Parent Profiles	2
IGA Dockets	2
English & Maths	2
Head Lice	2
JPS Sport	2
Library Catering	2
Book Club	2
School Contributions	3
Canteen News	3
Accident Insurance	3
Have a Laugh	3
Classifieds	4
Staff Profile	4

## From the Principal's Desk

### Welcome Back

Welcome back to school after the holidays. I hope that all staff, students and families had a safe and happy break. It was wonderful seeing the students again, refreshed and ready to begin a busy Term 3.

### New Students

Welcome to Tobin and Tiana C who have joined Year 3 and Year 1 respectively. Tobin and Tiana have come all the way from Casino. I hope you and your family enjoy becoming part of our great little school.

### NSW University Computer Skills Test Certificates

Last term, several students sat the University of NSW Computer Skills test. All students who sat the test were awarded certificates for their efforts. The following certificates were presented at our last school assembly: Participation: Lauren K, Lachie K, Zac B and Lachie L; Credit: Jack K, Harry L, Alysha K. Well done to these students.

### Laing O'Rourke P21 Site Inspection

Late last term the managing contractors for the DET Building the Education Revolution, Laing O'Rourke, visited Jerilderie PS with a team of architects, engineers and surveyors and completed an on-site assessment of our BER P21 projects. We can look forward to building works beginning later in the year.

### School Learning Support Officer

Congratulations to Shaun Bryce, who was the successful applicant for the position of School Learning Support Officer (Teacher's Aide). Shaun will work on a casual basis, five days per week, assisting the school in supporting students with disabilities. Shaun has a great history with Jerilderie PS as he is a former school captain. We look forward to Shaun once again joining our school community.

### Lions Club Speeches

Paige N, Lachie K, Zac B, Isabella W, James B and James G will present their outstanding speeches at the Lions Club meeting on Monday, 10<sup>th</sup> August at the Colony Inn Hotel.

The Year 3/4 children will begin at 6.00pm, followed by the Year 5/6 students. Parents, family and friends are encouraged to attend. Competitors dinner will be provided by the Lions Club.

### Leadership and Social Skills Program

During Term 3 students will participate in a leadership and social skills program. Students will learn valuable life skills in the areas of individuality, family identities, friendships, conflict at school and at home, goal setting and risk taking. These skills will prepare them for their senior years at our school and beyond.

### Human Swine Flu Update

Attached to the newsletter is an important update on Human Swine Flu and the recommendations from the Department of Education and Training on how schools should deal with reducing the spread of the virus.

**Staff or students who become unwell should stay away from school until they are well to minimise the transmission of the flu. Any student who identifies that they are unwell, or is displaying flu-like symptoms at school will be sent to a sick-bay area and their parent or carer will be called to take them home.**

Please watch carefully for any signs or symptoms of flu-like illness in your child. **If they are unwell please do not send them to school until their symptoms have gone.** These symptoms include fever, cough, tiredness, muscle aches, sore throat, chills or shortness of breath.

### Rebekah Salter CSU Intern

We welcome Rebekah Salter to our school. Rebekah, who is in her final year of study at Albury CSU will be completing her 5 week internship with the K/1/2 class. We look forward to Rebekah joining our staff.

### Donation Request

Second hand lockable 4 drawer filing cabinet needed for school sports shed.

**Andrew McEachern - Principal**

## Upcoming Events.....

### JULY

Thursday 30 Tony Locket Shield – Finley – Yr 5/6 boys.

Friday 31 State Cross Country Carnival at Sydney.

### AUGUST

Tuesday 4 Uni NSW English Test.

Tuesday 4 P&C Meeting, 6pm.

Wednesday 5 Shane Crawford Day – Yr 5/6 Boys/Girls.

Monday 10 Lions Speeches – Colony Inn – 6:30pm.

Wednesday 19 Uni NSW Maths Test.

Mon 24 – Fri 28 Book Week.

### SEPTEMBER

Tuesday 1 P&C Meeting, 6pm.

## PARENT PROFILES

Thank you to those parents who have sent in their profiles for the newsletter. Please keep sending them in. Come in for a photo, send one in or email one to [victoria.bryce@det.nsw.edu.au](mailto:victoria.bryce@det.nsw.edu.au)

**It's your turn next time David Harrison.**

Extra parent profile forms are available from the school office. If you would like one, please see Vic.

## IGA SHOPPING DOCKETS

Thank you to all the families who send in their Jerilderie IGA shopping dockets every month. Dockets for July need to be handed in by Tuesday, 11<sup>th</sup> August. **Please send dockets in flat, (not rolled up), as this makes it easier for processing.**

PLEASE KEEP COLLECTING!!

### English and Maths Tests

All students in years 3 – 6 will sit the University of NSW English Test on Tuesday, 4<sup>th</sup> August and the UNSW Maths Test on Wednesday, 19<sup>th</sup> August. The fees for these tests have been paid by the P&C and the school.

### HEAD LICE

Please check tonight and regularly every Friday. We can never completely eradicate this problem, but if we all work together, we can at least contain their spread.

# JPS SPORT

### State Cross Country Carnival

Good luck to Tom S, Lachie L and Zac B who will compete at the State Cross Country Carnival in Sydney on Friday. Everyone at Jerilderie PS is very proud of these athletes and I am sure they will have a fabulous time representing the Riverina Region at this important sporting event.



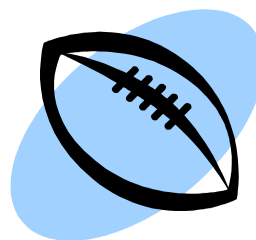
Lachie, Tom and Zac.

### Tony Locket Shield

Good luck to the boys in Year 5/6 who will participate in the Tony Locket Shield football gala day as part of the Jeri/Berri team in Finley this Thursday, 30<sup>th</sup> July. Finley PS, Deni South PS, Edward PS, Jerilderie/Berrigan PS and Mulwala/Savernake/Oaklands will be fielding teams. The games will be 2 X 15min halves, playing a full field with a 3 minute half time. 12 minutes between games. There will be a canteen available on the day with the usual footy food.

The winner from the day goes on to play the winner from the Griffith area. The winner from Griffith goes on to play the winner from Albury/Wagga to move onto the finals on the Central Coast.

**Please ensure that the permission note that was sent home last term is returned before Thursday.**



## Housekeeping Reminders.....

### SCHOOL CONTRIBUTIONS

The school contributions have remained at **\$35.00** per child this year. This will help cover the cost of school resources that are regularly used in the classroom. This is the only major contribution we ask from families apart from school excursions later in the year. **Could this please be paid as soon as possible.** Please feel free to come and see me if you have any concerns with payment.

### CANTEEN NEWS

TERM 3	<u>Supervisor</u>	<u>Helper</u>
<b>AUGUST</b>		
Monday 3	Rozie Kennett	Anjila Clough
Monday 10	Julie Sleigh	Camellia Stephen
Monday 17	Tash Nash	Susan Kofoed
Monday 24	Lisa Knight	Kellie Harrison
Monday 31	Shelley Barlow	Maxine King
<b>SEPTEMBER</b>		
Monday 7	Gaila Smith	Joyleen Kohler
Monday 14	Janine A'Vard	Sally Simpson
Monday 21	Kellie Thomas	Kellie Harrison
Monday 28	Carmen Lawton	Kylie Pitt

**Families are responsible for arranging swaps if unable to attend their rostered day.**

**Families will be rostered on in turn again next term. Families are then responsible for arranging swaps if they cannot attend their rostered day.**

### STUDENT ACCIDENT/INJURY INSURANCE

As in previous years, an accident/injury insurance cover is available through the P&C at a cost of **\$4.40 per student**. This will cover your child for one year, **24 hours a day** (school and home). Only loss of limbs, eyes etc. are covered at home. Broken bones, stitches etc. are only covered if they occur at school.



## Have a Laugh .....

In what Australian capital city do the most people with fuzzy hair live in?

**Frizz-bane!**

Contributed by Taneisha King – Yr 3

\*\*\*\*\*

### Fathers then & now

**Fathers of 1900 didn't have it nearly as good as fathers of today; but they did have a few advantages:**

*In 1900, fathers prayed their children would learn English.*

*Today, fathers pray their children will speak English.*

*In 1900, if a father put a roof over his family's head, he was a success.*

*Today, it takes a roof, deck, pool, and 4-car garage. And that's just the vacation home.*

*In 1900, a father waited for the doctor to tell him when the baby arrived.*

*Today, a father must wear a smock, know how to breathe, and make sure film is in the video camera.*

*In 1900, fathers could count on children to join the family business.*

*Today, fathers pray their kids will soon come home from college long enough to teach them how to work the computer and set the VCR.*

*In 1900, fathers shook their children gently and whispered, "Wake up, it's time for school."*

*Today, kids shake their fathers violently at 4am, shouting, "Wake up, it's time for hockey practice."*

*In 1900, a father came home from work to find his wife and children at the supper table.*

*Today, a father comes home to a note: "Jimmy's at baseball, Cindy's at gymnastics, I'm at adult-Ed, Pizza in fridge."*

*In 1900, fathers threatened their daughters suitors with shotguns if the girl came home late.*

*Today, fathers break the ice by saying, "So.....how long have you had that earring?"*

*In 1900, a father was involved if he spanked the kid now and then.*

*Today, a father's involved only if he coaches Little League and organises Boy Scouts and car pools.*

*In 1900, when fathers entered the room, children often rose to attention.*

*Today, kids glance up and grunt, "Dad, you're invading my space."*

**In 1900, fathers were never truly appreciated.**

**In 2009, fathers are never truly appreciated.**

### CATERING FOR LIBRARY OPENING

On Tuesday, 7<sup>th</sup> July P&C catered for the official opening of the Jerilderie Library. Many positive comments were received. I'd like to thank Rozie, Terri, Kellie Thomas, Craig and Kate McRae for their help. Thanks also to everyone who lent their platters.

Lisa Knight – Catering Officer

### **BOOK CLUB**

Student Book Club order forms were distributed today. Any orders, along with payment need to be returned by Wednesday, 12<sup>th</sup> August.

Thank you

Pam Hardcastle – Book Club Coordinator



## **Classifieds .....**

### FINLEY TAFE CAMPUS

Enrolments taken now: 03 5883 9700 (Ros or Nola). Concessions available for eligible Centrelink cardholders.

#### **Computers for Beginners**

Wednesday 6pm – 9pm or Thursday 9am – 1pm (limited places).

#### **Computer Bookkeeping using Quickbooks or MYOB**

Monday 6pm – 9pm.

#### **Using Digital Cameras**

Thursday 12:30pm – 3:30pm OR 6pm – 9pm.

#### **Certificate 2 & 3 in Business**

Flexible Delivery Monday, Tuesday & Wednesday 9:15 – 3pm

OR

Thursdays 5pm – 8pm.

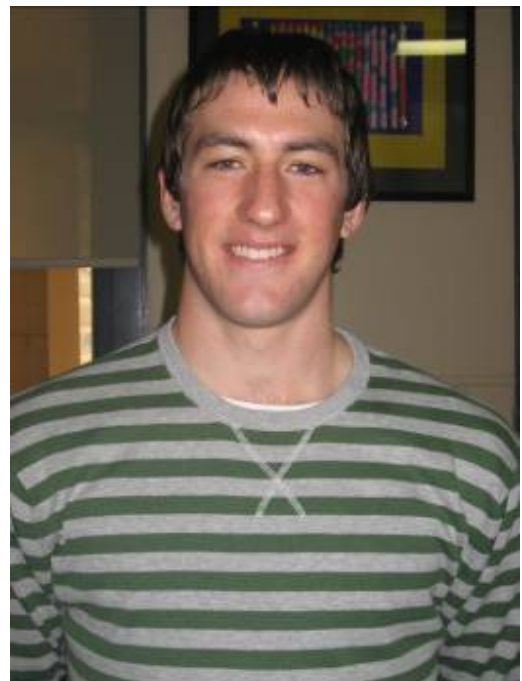
#### **Certificate 4 in Aged Care**

This course is offered by a workshop model once per fortnight commencing in August. Please contact the Finley Campus for more information.

**Auskick, Netta and all Junior Football and Netball teams will have their Presentation / Vote Count on Sunday, 9<sup>th</sup> August at Monash Park, commencing at 10:30am. Further details next newsletter.**

## **STAFF PROFILE**

**Name:** Shaun Bryce.  
**Age:** 18.  
**Star Sign:** Virgo.  
**Significant Others:** Sophie & family.  
**Favourite Food:** Mum's cooking.  
**Favourite Drink:** Johnny.  
**Favourite TV Show:** Masterchef.  
**Fav. Holiday Destination:** Queensland.  
**Pet Hate:** Losing football.  
**Fav. Footy Club:** Sydney.  
**Most Embarrassing Moment:** Being mistaken for Doggy's son.  
**Fav. Make of Car:** Ferrari.  
**Favourite Smell:** Rain.  
**Fav. Childhood Memory:** Josh and I playing lightning premiership.  
**Favourite Past Time:** Seeing friends / football.



**PUMP CLASS:** Sylvia's pump class on Monday nights will continue this term at 7:00pm (not 7:30pm) at the sports centre. \$50.00 for 6 classes or \$10.00 per class.



## **EXCHANGE STUDENTS IN NEED OF VOLUNTEER HOST FAMILIES.**

**Have you ever considered introducing your own children to an older international sibling?**

**World Education Program is looking for Volunteer Host Families for International Students arriving in February 2010.**

**Our Big Brothers & Big Sisters from France, Switzerland, Japan, Brazil, Italy, and Belgium are keen to start corresponding with a family they can call their own and learn about the place they will call home.**

**If you would like more information on becoming a Host Family, please contact:**

**Nikki Medwell  
Inbound Exchange Administrator  
World Education Program**

**Ph: (03) 9598 4733  
Fax: (03) 9598 4233  
Toll Free: 1300 884 733  
Email: [nikkimedwell@wep.org.au](mailto:nikkimedwell@wep.org.au)**

**An information pack can be sent on request.**

**It's easier than you think & a fantastic experience for all!**

# **TRIPLE P – POSITIVE PARENTING** **PROGRAM INFORMATION SEMINAR**

Parents have the important role of raising healthy well adjusted children who have the skills and confidence to succeed at school and in their relationships with others.

Triple P parenting program provides practical answers to everyday parenting concerns.

This seminar is designed to assist you in your parenting role.

**Course:** Raising Resilient Children                      Wednesday 12<sup>th</sup> August  
**Time:** 7.00 pm – 9.00 pm  
**Where:** Sacred Heart Primary School,  
37 – 45 Charlotte St., TOCUMWAL

**Bookings are essential.** Please book in by the 5<sup>th</sup> August.

For more information or bookings please contact:

Jacki Hammonds on 5883 3844 / 0429 000 235

OR

Pauline Parr on 5883 1133.

*BE THE **BEST** PARENT YOU CAN BE*



# DEPARTMENT OF EDUCATION AND TRAINING

## Human Swine Flu Information Sheet

This year it is likely many more people will come down with flu-like illnesses than in recent flu seasons because few people have immunity to the human swine flu virus.

As the number of cases of flu increases, we all need to take steps to minimise the transmission of the virus in school communities as some staff and students are at greater risk of severe illness from flu.

Staff or students who become unwell should stay away from school until they are well to minimise the transmission of the flu.

Any student who identifies that they are unwell, or is displaying flu-like symptoms at school will be sent to a sick-bay area and their parent or carer will be called to take them home.

Please watch carefully for any signs or symptoms of flu-like illness in your child. If they are unwell please do not send them to school until their symptoms have gone. These symptoms include fever, cough, tiredness, muscle aches, sore throat, chills or shortness of breath.

Some people are more likely to develop severe illness from both seasonal influenza and swine flu. NSW Health advises that this group includes people who:

- Are pregnant (particularly in the second and third trimester)
- Have chronic lung disease (including asthma)
- Are very obese
- Have chronic heart conditions
- Have chronic kidney disease
- Have chronic liver disease
- Have blood disorders (including sickle cell disease)
- Have neurological disorders
- Have metabolic disorders (such as diabetes)
- Have weakened or suppressed immune systems (which may be caused by cancers, medications or HIV/AIDS)
- Are of Aboriginal and/or Torres Strait Islander background (of any age).

If you or your child is in one of these categories, please seek urgent medical attention as soon as symptoms of flu appear because you may need anti-influenza medication and it works best if given early.

The department has policies in place to support schools this flu season. I can assure you that the department will continue to act on all advice received from NSW Health to ensure the health, safety and wellbeing of our staff and students. Additional health information is available from the H1N1 Influenza 09 section of the NSW Health website at:

<http://www.emergency.health.nsw.gov.au/swineflu/index.asp>

**CANTEEN ROSTER**  
**JERILDERIE PUBLIC SCHOOL**  
**TERM 3, 2009**

I will be able to help out with canteen on the following date/s.

I am willing to be the Supervisor / Helper (Please indicate).

	<u>Supervisor</u>	<u>Helper</u>
Monday, 3 <sup>rd</sup> August	Rozie Kennett	Anjila Clough
Monday, 10 <sup>th</sup> August	Julie Sleigh	Camellia Stephen
Monday, 17 <sup>th</sup> August	Tash Nash	Susan Kofoed
Monday, 24 <sup>th</sup> August	Lisa Knight	Kellie Harrison
Monday, 31 <sup>st</sup> August	Shelley Barlow	Maxine King
Monday, 7 <sup>th</sup> Sept	Gaila Smith	Joyleen Kohler
Monday, 14 <sup>th</sup> Sept	Janine A'Vard	Sally Simpson
Monday, 21 <sup>st</sup> Sept	Kellie Thomas	Kellie Harrison
Monday, 28 <sup>th</sup> Sept	Carmen Lawton	Kylie Pitt

Signed: .....

Emergency Helper: .....

## JERILDERIE PUBLIC SCHOOL

### CANTEEN PRICE LIST

## WINTER MENU - Terms 2 and 3, 2009.

### **RECESS**

Veg / Cheese Quarters	\$0.40c
Raisin Toast (1 slice)	\$0.40c
Pikelets	\$0.40c
Cinnamon Bun	\$0.40c
Fresh Fruit / Apples	Prices vary
Fruit Cups	\$0.80c

### **Drinks (250ml cup)**

Soup.....\$1.00 (half cups available for younger children).

Warm Milo.....\$1.00 (half cups available for younger children).

*Other snacks may be available at recess.*

### **LUNCH**

Large Pies	\$3.00
Party Pies	\$0.80c
Large Sausage Rolls	\$2.00
Bolognaise & Pasta (+ cheese)	\$3.00
Pizza – Ham & Pineapple	\$1.60
Marinated Chicken Drummetts	\$0.60c
Hot Dog	\$2.50
Steamed Dim Sims	\$0.80c

### **SANDWICHES**

Ham	\$2.00
Cheese	\$1.80
Ham/Cheese	\$2.20
Ham/Cheese/Tomato	\$2.30
Vegemite	\$1.60

*Toasted – extra 10c*

### **DRINKS**

Big M's	\$1.50
(Chocolate, Strawberry)	
Fruit Juice 100% 200ml	\$1.00
(Orange or Apple)	

### **ICECREAMS**

Billabongs	\$1.20
Icy Poles	\$0.80c
Mini'z	\$0.70c
Frosty Fruit	\$1.30
Milo Cups	\$1.50

*Drinks are available at recess and lunchtime.*